



SUICIDE SAFER
C O M M U N I T I E S

THERE IS A PROBLEM...
we have a

**GROUND-BREAKING
SOLUTION**

ASSAT 

Introducing ASSAT
Aggregate Suicide Safety Assessment Tool

Suicide

A Global Health Problem



1 SUICIDE EVERY 40 SEC



1 ATTEMPT EVERY 2 SEC

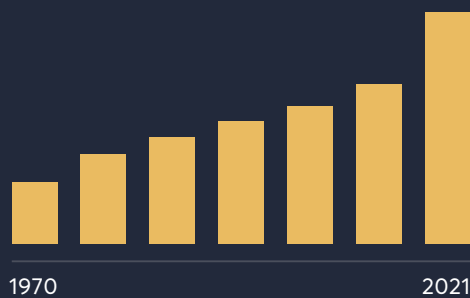
1*

1.8% of global deaths are suicides

2*

60% increase in the last 45 years

3*



Global Economic Loss

\$1 TRILLION

(approximately)

4*

although, research has shown that...

FOR EVERY \$1.00 SPENT ON EFFECTIVE PREVENTION

\$2.50 IS SAVED ON THE COST OF SUICIDE

5*



THERE IS AN URGENT NEED FOR INFORMED, EDUCATED AND SUSTAINABLE SOLUTIONS TO STRENGTHEN COMMUNITY RESPONSES TO SUICIDE.

THE SOLUTION

A global first, ASSAT **Artificial Intelligence Software** will provide a more timely response to suicide based on **real time intelligence**. It is a tool for communities, organizations and even individuals to assess their current response to suicide, build on their strengths and address gaps in services and procedures.



1* - <https://www.who.int/news/item/09-09-2019-suicide-one-person-dies-every-40-seconds> 2* & 3* - <http://www.suicide.org/international-suicide-statistics.html> 4* - This figure is an 'estimate' based on the cost of suicide in Australia of \$17.5 billion representing 1.3% of GDP and the cost of suicide in the USA of \$94 billion being .5% of GDP therefore the global estimate is potentially \$1 trillion but that the actual data is not available. 5* <https://www.sprc.org/about-suicide/costs>

ASSAT – Artificial Intelligence Creating Suicide Safer Communities

The software allows users to obtain a real time suicide safety assessment that considers a wide range of contributing factors and the complex effect they have in aggregate. It can be implemented for an individual, an organisation or a geographic region.

Implementation Process



Stage One Preparation

Engage stakeholders establish agreement; develop a working timeline.



Stage Two Communication & Awareness

Disseminate information; engage marketing execute a strategic campaign.



Stage Three Implement Data Collection

Establish data integrity and obtain data set minimums



Stage Four Data Processing & Assessment

Finalize metrics and apply algorithms to the data set. Produce data outputs.



Stage Five Production and Presentation of Findings

Produce profile; risk matrix and strategic response recommendations.

How ASSAT benefits the community

With ASSAT, communities and organizations have a dramatically increased ability to offer a substantive, informed response to real time identified elevated risk and proactively respond to the challenges suicide presents in the community.

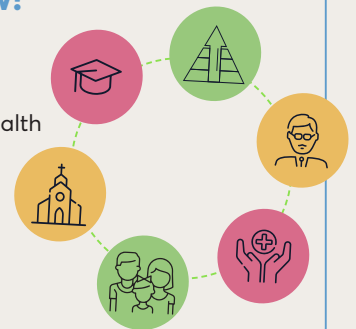


We have our report, what now?

Suicide is a global tragedy, but there is hope.

Suicide prevention is best achieved through collaboration: when individuals, families, health and community organizations, workplaces, schools, churches and governments work together in an environment of trust and common good, much can be achieved.

The strategic response recommendations produced by ASSAT can guide this process and enable informed collaboration.



The Second Half of a Robust Solution

Suicide Safer Communities' Framework



Suicide Safer Communities utilizes an evidence-informed, internationally recognized framework to motivate, enable, equip and empower communities to build capacity within their community to respond to people at risk of suicide.



The framework includes a holistic and comprehensive treatment of policies & procedures, training, response mechanisms and referral pathways to ensure the best possible response to the community, organization or individual at risk.

The SSCF Strategy



Suicide Safer Communities will project manage the framework implementation process in conjunction with community leadership. Once SSCF has been completed, international accreditation is awarded and can be easily maintained subject to a yearly assessment of ongoing preparedness.

For a Sustainable Future



The benefit for communities is the capacity to achieve a greater awareness and sustainability in suicide safety rather than solely relying on post-vention responses to suicide loss. International Suicide Safer Community Accreditation and ongoing support provides existing and prospective residents/members with much needed reassurance and wellbeing security. Once implemented the framework is extremely effective to maintain.

LIFE!CENTRAL

Who We Are

Life! Central Services (LCS), incorporated in 2004, is a preventative agency based in Australia, providing programs and support to those at risk in the community. Our programs are based on the philosophy and practice of providing clients with tools for healthy and safe personal welfare and social engagement. This emphasis on preventative practice, is psychologically, physically, socially and economically more beneficial as well as being more sustainable than solely treatment focused programs.

LCS holds the rights for the distribution and delivery of the Aggregate Suicide Safety Assessment Tool (ASSAT), Suicide Safer Communities Framework (SSCF) including individual training components and Sherlock Intelligence Systems (SIS) Artificial Intelligence Software.

Partner With Us, Change The World

MAKE A TAX DEDUCTIBLE DONATION

Life Central Resources Care Fund

BSB:033-686 Account number: 430179

Interested in helping us in other ways? Call or email us to discuss!

Life! Central Services Inc – ABN: 25 212 873 602

Life! Central Resources Inc – ABN: 47 606 592 064

Unit 2/65 Berwick Cranbourne Road Cranbourne East Vic 3977

☎ Ph 0432081600 | ☎ Mob +61403135040

✉ dgormlie@lifecentral.org.au

lifecentral.org.au suicidesafercommunities.org.au



Need help Now? Call Lifeline – 13 11 14
Suicide Call Back Service – 1300 659 467

LIFE!CENTRAL



SUICIDE SAFER
COMMUNITIES

helpnet.



Sherlock
Intelligence Systems